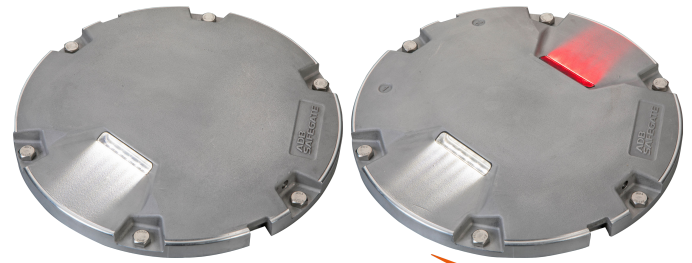


# AXON

LED L-850A(L), L-850B(L) Runway  
Centerline and Touchdown Zone  
Inset 8-inch and 12-inch



ADB SAFEGATE  
**AXON**

## Compliance with Standards (current version)

FAA	AC 150/5345-46 and FAA Engineering Brief No. 67, ETL certified
ICAO	Annex 14, Volume 1
NATO	STANAG 3316
IEC	61827
EASA	CS-ADR-DSN
STAC	PRO/STAC/SE/ENIS/600S
UK	CAP 168
UFC	3-535-01
Canada	TP 312
Australia	MOS 139
CE	

## Uses

### ICAO

- Runway centerline
- Touchdown zone

### FAA

- L-850A(L) Runway centerline
- L-850B(L) Touchdown zone

## Features and Benefits

### Efficiency

- EQ has an integrated ILCMS remote for use with the LINC 360 system providing high data capacity and resisting degradation from various types of radio effects to provide a superior communication platform
- Precision aimed optics enhancing photometric performance and complementing extended LED life
- Reduced bottom pan profile allowing for very shallow base can installation
- LEDs pulse width modulated (PWM) at 400 Hz optimizing LED performance and eliminating perceptible flicker to a moving human observer throughout the range of brightness steps
- Operates at all steps of constant current regulator technologies designed in compliance with IEC or FAA requirements

- Fully dimmable lights, conforming to the dimming curve of traditional halogen lights
- Low protrusion, high-intensity, Style 3 ( $\leq 6.35$  mm) inset light fixtures
- No negative slope in front of the prisms

### Sustainability

- Fully encapsulated all-in-one universal power supplies for Runway, Taxiway, Approach and Omni inset families
- Latest generation LEDs providing a long-lasting light source with high efficiency and low power consumption
- Reinforced top cover substantially exceeding standards to improve durability and longevity
- One single family of fixtures covering all runway, taxiway and approach applications
- IP68 rated enclosure designed for harsh environments; all fastenings are stainless steel
- Reinforced prism available as an option
- Compatible with existing infrastructure allowing for direct replacement of existing LED inset fixtures

### Safety

- Improved mechanical design to strengthen and consolidate components, improving the customer maintenance experience
- Fail-open option for compatibility with legacy monitoring systems and optimization of advanced control/ monitoring systems
- Failed-LED Detection as required by Engineering Brief 67D
- Robust lightning protection complying with ANSI/IEEE C62.41-1991; Location Category C2 as required by FAA Eng. Brief 67. Category C2 is defined as a  $1.2/50 \mu\text{s} - 8/20 \mu\text{s}$  combination wave, with a peak voltage of 10,000 V and a peak current of 5,000 A

### Power Supply

- Non-Monitored — Power only
- Monitored — integrated Fail-open technology
- EQ with integrated ILCMS with OFDM technology for use with LINC 360 system



## Dimensions and Weight

<b>Dimensions</b>	203 mm (8 in)	305 mm (12 in)
<b>Weight</b>	3.0 kg / 6.6 lb (8 in)	6.8 kg / 15 lb (12 in)

## ANNEX

### 8-inch and 12-inch light fixtures without Arctic Kit (heater)

Fixture type – 1 cord set <sup>1</sup>	Fixture load	Isolation transformer		CCR load
		Wattage	Load	
Runway Centerline, L-850A(L), bidirectional	34.9 VA	45 W	14.2 VA	49.1 VA
Touchdown Zone, L-850B(L), unidirectional	25.5 VA	25 W	7.2 VA	32.7 VA

### 8-inch and 12-inch light fixtures with Arctic Kit (heater)

Fixture Types – 1 cord set <sup>1</sup>	Fixture load	Isolation transformer		CCR load
		Wattage	Load	
Runway Centerline, L-850A(L), bidirectional	62.6 VA	65 W	16.6 VA	79.2 VA
Touchdown Zone, L-850B(L), unidirectional	48.8 VA	45 W	9.7 VA	58.5 VA

#### Notes

<sup>1</sup> Values provided are for the "S" option non-monitored power only.

#### Note:

- See manual UM-5055 for other power supplies.
- EQ fixtures:
  - The isolation transformer must have an additional 8 VA available above the fixture load for communication bandwidth. Size transformer to next size up to assure additional 8 VA coverage. Transformers can be safely overloaded by 10 %.
  - Legacy BRITE II or AGLAS 2 systems — Order "M" power supply
- Fail-open fixtures:
  - The maximum rating for the isolation transformer is 200 W
- Additional voltage loss when longer secondary cables are used is not included in above table; these additional losses may result in a larger size isolation transformer requirement and must be factored into the circuit load calculation
- Additional voltage loss in primary cable is not included in above table; this additional loss will result in a higher CCR load and must be factored into the circuit load calculation
- Efficiency of the isolation transformer depends on the manufacturer of the transformer

For more information about the product, including manuals and certifications, please see the Product Center on the ADB SAFEGATE website: [www.adbsafegate.com](http://www.adbsafegate.com).