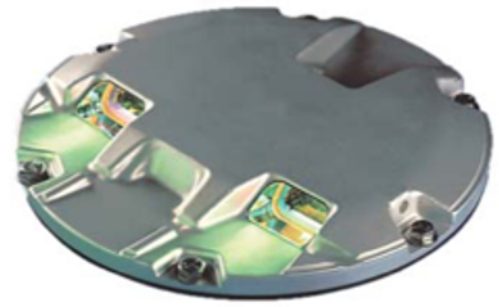


RUNWAY LIGHTING

IRTA

Incandescent In-pavement Runway
Threshold/Military Approach Light
STYLE 2, HIGH-INTENSITY



Compliance with Standards

- FAA:** L-850E AC 150/5345-46 (Current Edition).
Military: Photometry complies with UFC 3-535-01 Fig 3-2.B (Approach White & Red) and Fig 4-5 (Threshold Green).

Uses

FAA L-850E

- Threshold lighting system, L-850E (2 green, 105 W lamps)

U.S. Military

- Military approach lighting system (2 white or 2 red, 105 W lamps)
- Military threshold system (2 green, 105 W lamps)

Features

- FAA Style 2—Low protrusion above ground of ≤ 0.50 inch reduces vibrations caused by aircraft landing gear in both the light fixture and the landing gear, increasing lamp life
- Designed and built with simplicity and ease of maintenance in mind
- Light channel in front of prism windows protects prisms from damage and prevents rubber buildup thereby maintaining optimal light output
- Low-energy/long-life halogen lamps are 105 W with a rated life of 1,000 hours at 6.6 A
- Low-temperature lights. Temperature rise at center of top cover remains below FAA-specified limit of 320 °F (160 °C).
- Fixture uses aluminum alloy cover and inner cover, stainless steel hardware, and aluminum alloy and stainless steel optical assembly
- Includes a UL 467 rated ground lug, which accepts an AWG 6 earth ground wire

Ordering Code

44A6248 - X X X 0

Color

- 1 = Green
- 2 = Military White
- 3 = Military Red
- 4 = Military Green

Film Disc Cutout

- 1 = Included
- 2 = Not Included

Light Beam

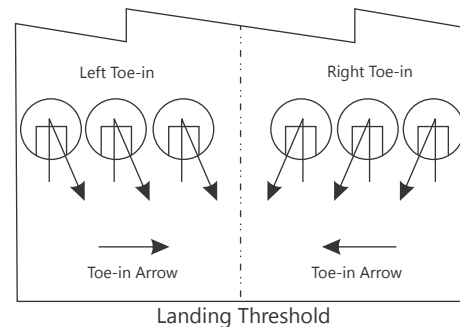
- 1 = Straight¹
- 2 = Right Toed
- 3 = Left Toed

Notes

- External fixture-to-base can O-ring, Part No. 7080.90.650, is ordered separately if needed for installation. For FAA installations, this O-ring is normally included with the flange ring.
- ¹ Normally used on military applications

Toe-in Coding

- Toe-in direction is from the pilot's perspective (the approach end of the runway)
- For more information about FAA-E-2968 Steady Burning, Semi-Flush, Approach Light for MALS, Style II, unidirectional, green applications, see catalog sheet 2029.



RUNWAY LIGHTING

IRTA

Dimensions

Outside Diameter:	11.94 in / 30.33 cm
Bolt Circle Diameter (L-868B):	11.25 in / 28.58 cm
Max. Bottom Cover O.D.:	9.94 in / 25.25 cm
Bottom Cover Depth:	3.8 in / 9.65 cm ¹

Notes

¹ If used in conjunction with an L-868B Top Section, the overall height of the Top Section must be 4 in (10.16 cm) minimum.

Optional Snow Plow Ring

Depending on installation method and snow plowing technique used, a snow plow ring may be necessary. Snow plow rings are available for either standard or stainless steel adjustable Size B L-868 cans. Contact the ADB Safegate Sales Department for additional details.

Packaging

In cardboard box:	7 × 13 × 13 in / 17.8 × 33 × 33 cm
Weight with packing:	18.5 lb / 8.4 kg
Weight without packing:	15.5 lb / 7 kg

www.adbsafegate.com

Product specifications may be subject to change, and specifications listed here are not binding. Confirm current specifications at time of order.