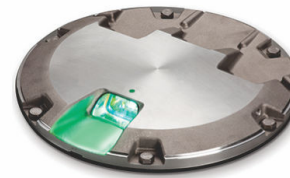


# RUNWAY LIGHTING

## IRTE

### Incandescent In-pavement Runway Threshold/End Light

FAA, STYLE 2, HIGH-INTENSITY



Runway Threshold Light



Runway Threshold/End Light

### Compliance with Standards

FAA: L-850D AC 150/5345-46 (Current Edition).

### Uses

#### FAA L-850D

- Runway displaced threshold light (unidirectional green, one 62 W lamp)
- Runway threshold/end (bidirectional red/ green: one 62 W lamp, green; two 62 W lamps, red)

### Features

- FAA Style 2-Low protrusion above ground of  $\leq 0.50$  inch reduces vibrations caused by aircraft landing gear in both light fixture and landing gear, increasing lamp life
- Designed and built with simplicity and ease of maintenance in mind
- Light channel in front of prism windows protects prisms from damage and prevents rubber buildup thereby maintaining optimal light output
- Low-energy/long-life halogen lamps are 62 W with a rated life of 1,000 hours at 6.6 A
- Low-temperature lights. Temperature rise at center of top cover remains below FAA-specified limit of 320 °F (160 °C).
- Fixture uses aluminum alloy cover and inner cover, stainless steel hardware, and aluminum alloy and stainless steel optical assembly
- Includes a UL 467 rated ground lug, which accepts an AWG 6 earth ground wire

### Ordering Code

44A6656 - X X X X

#### Threshold Beam

- 0 = Obscured
- 1 = Green Straight<sup>3</sup>
- 2 = Green Right Toed
- 3 = Green Left Toed
- 4 = Red Straight<sup>2</sup>
- 5 = Red Right Toed<sup>2</sup>
- 6 = Red Left Toed<sup>2</sup>

#### Runway End Beam

- 0 = Obscured
- 1 = Red Straight
- 2 = Red Right Toed<sup>3</sup>
- 3 = Red Left Toed<sup>3</sup>
- 4 = White Right Toed<sup>1,2</sup>
- 5 = White Left Toed<sup>1,2</sup>
- 6 = Yellow Right Toed<sup>1,2</sup>
- 7 = Yellow Left Toed<sup>1,2</sup>
- 8 = Yellow Straight<sup>2</sup>
- 9 = White Straight<sup>2</sup>

#### Film Disc Cutout

- 1 = Included
- 2 = Not Included

#### Base Mounting

- 1 = One Cord Set
- 2 = Two Cord Sets

#### Notes

- Fixtures manufactured after September 5, 2006, use one green 62 W lamp and two red 62 W lamps. For fixtures that use two green 105 W lamps and one red 105 W lamp, see data sheet DS-2055.
- External fixture-to-base can O-ring, Part No. 7080.90.650, is ordered separately if needed for installation. For FAA installations, this O-ring is normally included with the flange ring.

<sup>1</sup> 3° toe-in for displaced threshold/runway edge applications

<sup>2</sup> Color not recognized by the FAA

<sup>3</sup> Not submitted for ETL Certification

### Optional Snow Plow Ring

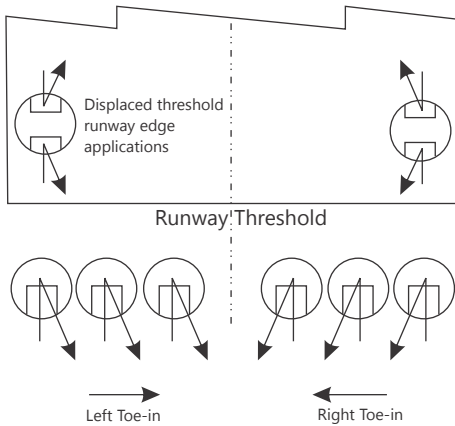
Depending on installation method and snow plowing technique used, a snow plow ring may be necessary. Snow plow rings are available for either standard or stainless steel adjustable Size B L-868 cans. Contact the ADB Safegate Sales Department for additional details.

# RUNWAY LIGHTING

## IRTE

### Toe-in Coding Threshold Only

- Toe-in direction for green side is from the pilot's perspective on approach. Opposite side (runway end/red side) is straight.
- Position the fixtures on either side of the runway so that the fixture toe-in points to the runway centerline
- In a displaced threshold/runway edge application, the toe-in is always towards the runway centerline. When ordering always choose the same toe-in direction as the threshold beam. For example, if the threshold beam is toed right, the runway edge light is toed right.



### Dimensions

Outside Diameter:	11.94 in / 30.33 cm
Bolt Circle Diameter (L-868B):	11.25 in / 28.58 cm
Max. Bottom Cover O.D.:	9.94 in / 25.25 cm
Bottom Cover Depth:	3.8 in / 9.65 cm <sup>1</sup>

### Notes

- <sup>1</sup> If used in conjunction with an L-868B Top Section, the overall height of the Top Section must be 4 in (10.16 cm) minimum.

### Packaging

	Runway End	Threshold/End
In cardboard box:	7 × 13 × 13 in / 18 × 33 × 33 cm	7 × 13 × 13 in / 18 × 33 × 33 cm
Weight with packing:	15.3 lb / 6.94 kg	18.5 lb / 8.4 kg
Weight packing:	12.3 lb / 5.58 kg	15.5 lb / 7 kg