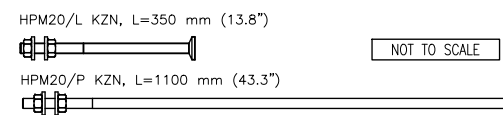
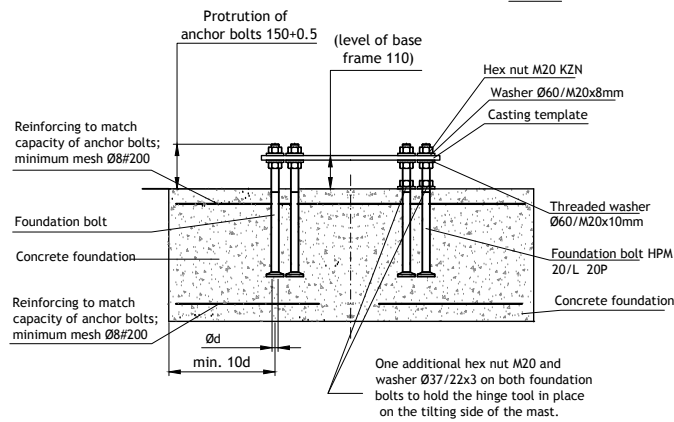


The mounting methodologies illustrated on this drawing are valid for the UEL and for the LEAP.

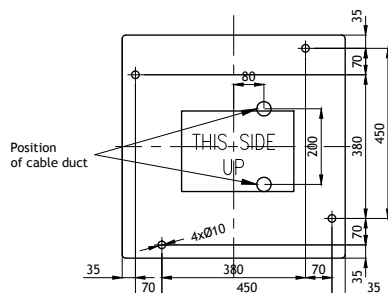
**FOUNDATION BOLTS**



**CASTING THE FOUNDATION NTS**



**CASTING TEMPLATE**  
scale 1/5



**TILTING DIRECTION OF THE MAST** →

**WARNING !**  
This drawing shows general installation details related to ADB products, and therefore is not to be considered as a "GOOD FOR CONSTRUCTION" drawing for specific projects. The designer must verify compliance of design with local codes and varying characteristics for each unique airfield application. ADB shall be relieved of any responsibility for amendments brought by Others to the original ADB drawings, even if such amended drawings still bear the ADB logo.



DRAWING DENOMINATION  
**LATTICE MASTS EXEL-400**

SCALE: 1/40 DIMENSION IN: mm

DRAWN BY: GZ  
CHECKED BY: VI  
DATE: 10/02/2015

**21AS21050**