

HELIPORTS

EHP-L

LED Elevated Heliport Perimeter Light



Compliance with Standards

FAA: Designed according to AC 150/5390-2 Heliport Design. L-861T AC 150/5345-46 (Current Edition) and the FAA Engineering Brief No. 67. ETL Certified (L-861T).

Uses

EHP is intended for use as a heliport perimeter light. The green and yellow omnidirectional light is used to define the perimeter of the area the helicopter requires for touchdown and lift-off (TLOF).

- Yellow EHPs are typically used on military applications
- Green EHPs are typically used for new civil applications
- Blue EHPs can be used for lead-in taxiway applications

Features

- Overall height installed is less than 8 inches, complying with AC 150/5390-2C requirements for raised perimeter lights
- Average individual LED life of 50,000 hours (minimum)
- 95-264 VAC, 50/60 Hz power supply minimizes installation costs by reducing required cable run wire size. Light output stays constant regardless of input voltage range.
- EHP with arctic option (U.S. Patent 7192155 B2) uses a thermostatically controlled heater to prevent ice and snow buildup from obscuring light output. Melts ice similar to traditional incandescent fixtures.
- Thermostatically controlled heater cycles on and off when temperature drops below freezing, reducing overall energy consumption
- For voltage-driven applications, the EHP with a thermostatically controlled arctic option is 2.6 times more efficient in warm weather operations and 1.5 times more efficient than a typical 54 W(VA) fixture in cold weather operations
- More than 500,000 ADB Safegate elevated LED fixtures are in use around the USA
- Direct replacement for incandescent fixtures
- Fixture uses aluminum casting, stainless steel hardware, and is protected with aviation yellow powder coat finish
- All parts are corrosion-resistant
- Rugged, low-profile design reduces the potential for damage in the FATO perimeter
- For additional features common to all of ADB Safegate's elevated LED fixtures, see data sheet 3043.

Ordering Code

LED Color

G = Green¹

Y = Yellow¹

B = Blue

Power

1 = Voltage Driven, 95-264 VAC, 50/60 Hz¹

2 = 50/60 Hz, Current Driven, 2.8-6.6 A

Overall Height

1 = 8 inches with junction box, no coupling¹

2 = 16 inches with junction box, 1.5-inch coupling¹

3 = 24 inches with junction box, 1.5-inch coupling¹

4 = 8 inches w/out j-box, with 1.5-inch coupling

5 = 8 inches w/out j-box, with 2-inch coupling

6 = 16 inches w/out j-box, with 1.5-inch coupling

7 = 24 inches w/out j-box, with 1.5-inch coupling

8 = 16 inches w/out j-box, with 2-inch coupling

9 = 24 inches w/out j-box, with 2-inch coupling

A = 12 inch OAH w/out j-box, with 1.5-inch coupling

B = 12 inch OAH w/out j-box, with 2-inch coupling

Arctic Option

0 = Without arctic option

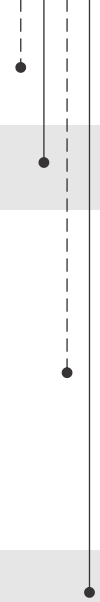
1 = With arctic option²

Notes

¹ Not ETL Certified.

² When powered by a parallel circuit, heater is designed for use at only 120 VAC, ±10%, 50/60 Hz.

EHP - X X X X 0



Operating Conditions

Temperature: -40 °F to +131 °F (-40 °C to +55 °C)

Humidity: 0 to 100%

Wind: Withstands wind velocities up to 300 mph (480 kph)

Electrical Supply

Current Driven	
W/out Heater	With Heater
2.8-6.6 A, 50/60 Hz, 12VA max.	2.8-6.6 A, 50/60 Hz, 27 VA max.
Voltage Driven	
W/out Heater	With Heater
95 VAC (min.) - 264 VAC (max.), 50/60 Hz, 10 W (21 VA) max.	120 VAC, ±10%, 50/60 Hz, 25 W (36 VA) max.

HELIPORTS

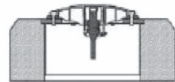
EHP-L

Installation Options

Stake mounting	A 2 × 2 × 30 inch (5.08 × 5.08 × 76.2 cm) galvanized steel angle stake assembly is sold separately (Part No. 44B0348). The EHP frangible coupling screws directly into a 1.5-inch threaded hub assembly making the fixture mechanically and electrically frangible.
Base plate	A 12-inch base plate with a 1.5-inch threaded hub assembly is sold separately (Part No. 1935). A plastic base plate with 2-inch hub is also available. The base plate mounts on a 12-inch L-867 base can (Also sold separately. Contact ADB Safegate for details).
Conduit elbow	A conduit elbow with a 2-inch hub assembly is pre-cast or poured in the excavation, ready to receive the fixture at ground level. (Part No. 1409.00.020).
Junction box	A junction box ready for direct mounting or burial in concrete can be provided. Contact ADB Safegate for details.



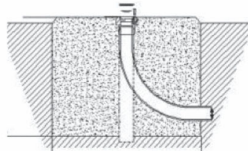
Stake Mount



Base Plate



Conduit Elbow



Packaging

Assembled Fixtures	Carton Dimensions		Indiv. Weight *
	Individual	12 Per Box	
8-inch OAH	6.5 × 6.5 × 20.5 in	16.5 × 21 × 20.5 in	2.75 lb
	16.5 × 16.5 × 52 cm	41.9 × 53.3 × 52 cm	1.25 kg
16-inch OAH	6.5 × 6.5 × 20.5 in	16.5 × 21 × 20.5 in	2.75 lb
	16.5 × 16.5 × 52 cm	41.9 × 53.3 × 52 cm	1.25 kg
24-inch OAH	6.5 × 6.5 × 31 in	16.5 × 21 × 33.5 in	4 lb
	16.5 × 16.5 × 79 cm	41.9 × 53.3 × 85 cm	1.81 kg

Notes

* Weight based on unpacked EHP with arctic option

Energy Cost Savings

LED Fixture Load	In can./Tungsten Halogen Load	Energy Savings
Current Driven, Without/Inactive Heater ¹		
12 VA	54 VA	4.5 times
Current Driven, without Heater Active ¹		
27 VA	54 VA	2.2 times
Voltage Driven, Without/Inactive Heater ¹		
21 VA	54 VA	2.6 times
Voltage Driven, without Heater Active		
36 VA	54 VA	1.5 times

Notes

¹ Fixture load does not include isolation transformer load