

Instruction Manual

96A0195

Retain for future use.

Rev. M, 7/8/14

FAA: L-862 AC 150/5345-46 (Current Edition)

ETL Certified

ERET-CB

Incandescent Elevated Runway Edge/Threshold Light

HIGH-INTENSITY, CLAMP BAND



Disclaimer

This manual could contain technical inaccuracies or typographical errors. ADB Airfield Solutions reserves the right to revise this manual from time to time in the contents thereof without obligation of ADB Airfield Solutions to notify any person of such revision or change.

Details and values given in this manual have been compiled with care. They are not binding, however, and ADB Airfield Solutions disclaims any liability for damages or detriments suffered as a result of reliance on the information given herein or the use of products, processes or equipment to which this manual refers. No warranty is made that the use of the information or of the products, processes or equipment to which this manual refers will not infringe any third party's patents or rights.

Warranties

Products of ADB Airfield Solutions manufacturer are guaranteed against mechanical, electrical, and physical defects (excluding lamps) which may occur during proper and normal use for a period of one year from the date of installation or 2 years from date of shipment and are guaranteed to be merchantable and fit for the ordinary purposes for which such products are made.

ADB Airfield Solutions will correct by repair or replacement, at its option, equipment or parts which fail because of mechanical, electrical or physical defects, provided that the goods have been properly handled and stored prior to installation, properly installed and properly operated after installation, and provided further that Buyer gives ADB Airfield Solutions written notice of such defects after delivery of the goods to Buyer. Refer to the Safety section for more information on Material Handling Precautions and Storage precautions that must be followed.

ADB Airfield Solutions reserves the right to examine goods upon which a claim is made. Said goods must be presented in the same condition as when the defect therein was discovered. ADB Airfield Solutions further reserves the right to require the return of such goods to establish any claim.

ADB Airfield Solutions' obligation under this guarantee is limited to making repair or replacement within a reasonable time after receipt of such written notice and does not include any other costs such as the cost of removal of defective part, installation of repaired product, labor or consequential damages of any kind, the exclusive remedy being to require such new parts to be furnished.

ADB Airfield Solutions' liability under no circumstances will exceed the contract price of goods claimed to be defective. Any returns under this guarantee are to be on a transportation charges prepaid basis. For products not manufactured by, but sold by ADB Airfield Solutions, warranty is limited to that extended by the original manufacturer.

This is ADB Airfield Solutions' sole guarantee and warranty with respect to the goods; there are no express warranties or warranties of fitness for any particular purpose or any implied warranties of fitness for any particular purpose or any implied warranties other than those made expressly herein. All such warranties being expressly disclaimed.

Trademarks

General notice: other product names used here are for identification purposes only and may be trademarks of their respective companies.

Proprietary Information

This information carrier contains proprietary information, which shall not be used for other purposes than those for which it has been released, nor be reproduced or disclosed to third parties without the prior written consent of ADB Airfield Solutions.

No part of this publication may be reproduced, stored in a retrieval system, or transmitted in any form or by any means, mechanical, photocopy, recording, or otherwise, without the prior written permission of ADB Airfield Solutions. No patent liability is assumed with respect to the use of the information contained herein. Neither is any liability assumed for damages resulting from the use of the information contained herein.

ADB Airfield Solutions shall not be liable to the purchaser of this product or third parties for damages, losses, costs, or expenses incurred by purchaser or third parties as a result of accident, misuse, or abuse of this product or unauthorized modifications, repairs, or alterations to this product. ADB Airfield Solutions shall not be liable against any damages arising from the use of any options or parts other than those designated as approved products.

Copyright © 2010 by ADB Airfield Solutions. All rights reserved.

TABLE OF CONTENTS

| | |
|--|----------|
| ERET-CB | i |
| 1.0: Safety | 1 |
| 1.1 :To use this equipment safely: | 1 |
| 1.1.1 :Additional Reference Materials: | 1 |
| 1.1.2 :Qualified Personnel | 1 |
| 1.1.3 :Intended Use | 1 |
| 1.1.4 :Storage | 1 |
| 1.1.4.1 :Operation | 2 |
| 1.1.4.2 :Material Handling Precautions | 2 |
| 1.1.4.3 :Action in the Event of a System or Component Malfunction..... | 2 |
| 1.1.4.4 :Maintenance and Repair..... | 2 |
| 2.0: Incandescent Elevated Runway Edge/Threshold Light | 3 |
| 2.1 :About this manual | 3 |
| 2.1.1 :How to work with the manual | 3 |
| 2.1.2 :Record of changes | 3 |
| 2.1.3 :Icons used in the manual | 3 |
| 2.2 :Introduction | 4 |
| 2.2.1 :L-862/L-862E Light Fixture: Required Equipment | 6 |
| 2.2.2 :Specifications | 7 |
| 2.2.2.1 :Input..... | 7 |
| 2.2.2.2 :Lamp..... | 7 |
| 2.2.2.3 :Environmental Operating Conditions | 7 |
| 2.2.2.4 :Temperature | 7 |
| 2.2.2.5 :Wind..... | 7 |
| 2.2.2.6 :Altitude..... | 7 |
| 2.2.2.7 :Relative Humidity..... | 7 |
| 2.2.2.8 :Exposed Materials | 7 |
| 2.2.2.9 :Photometric Data | 7 |
| 2.2.2.10 :Minimum Beam Coverage | 7 |
| 2.2.2.11 :Minimum Average Intensity | 7 |
| 2.2.2.12 :Lamp Current and Percent Brightness | 7 |
| 2.3 :Installation | 8 |
| 2.3.1 :Introduction | 8 |
| 2.3.2 :Unpacking | 8 |
| 2.3.3 :Assembly Instructions | 8 |
| 2.3.4 :Placement | 9 |
| 2.3.5 :Base Mounting | 10 |
| 2.3.6 :Stake Mounting | 12 |
| 2.4 :Maintenance | 14 |
| 2.5 :Troubleshooting | 15 |
| 2.5.1 : Repair | 15 |
| 2.5.1.1 :Lamp Replacement..... | 15 |
| 2.6 :Parts | 16 |
| 2.6.0.1 :44A2071– X 1 X X | 17 |
| *ETL certified. | 17 |
| 2.6.1 :Socket Mounting Plate Assembly Parts List | 21 |
| 2.6.2 :Optional Stake Assembly Parts List | 22 |
| 2.6.3 :L-867 Base Plate Parts List | 23 |
| 2.6.4 :Recommended Spare Parts | 23 |

1.0 Safety

This section contains general safety instructions for installing and using ADB Airfield Solutions equipment. Some safety instructions may not apply to the equipment in this manual. Task- and equipment-specific warnings are included in other sections of this manual where appropriate.

1.1 To use this equipment safely:



WARNING

Read installation instructions in their entirety before starting installation.

- Refer to the FAA Advisory Circular AC 150/5340-26, Maintenance of Airport Visual Aids Facilities, for instructions on safety precautions.
- Observe all safety regulations. To avoid injuries, always disconnect power before making any wiring connections or touching any parts. Refer to FAA Advisory Circular AC 150/5340-26.
- Become familiar with the general safety instructions in this section of the manual before installing, operating, maintaining or repairing this equipment.
- Read and carefully follow the instructions throughout this manual for performing specific tasks and working with specific equipment.
- Make this manual available to personnel installing, operating, maintaining or repairing this equipment.
- Follow all applicable safety procedures required by your company, industry standards and government or other regulatory agencies.
- Install all electrical connections to local code.
- Use only electrical wire of sufficient gauge and insulation to handle the rated current demand. All wiring must meet local codes.
- Route electrical wiring along a protected path. Make sure they will not be damaged by moving equipment.
- Protect components from damage, wear, and harsh environment conditions.
- Allow ample room for maintenance, panel accessibility, and cover removal.
- Protect components from damage, wear, and harsh environment conditions.
- Allow ample room for maintenance, panel accessibility, and cover removal.
- Protect equipment with safety devices as specified by applicable safety regulations.
- If safety devices must be removed for installation, install them immediately after the work is completed and check them for proper functioning prior to returning power to the circuit.

1.1.1 Additional Reference Materials:

- NFPA 70B, Electrical Equipment Maintenance.
- NFPA 70E, Electrical Safety Requirements for Employee Workplaces.
- ANSI/NFPA 79, Electrical Standards for Metalworking Machine Tools.
- OSHA 29 CFR, Part 1910, Occupational Health and Safety Standards.
- National and local electrical codes and standards.

1.1.2 Qualified Personnel

The term **qualified personnel** is defined here as individuals who thoroughly understand the equipment and its safe operation, maintenance and repair. Qualified personnel are physically capable of performing the required tasks, familiar with all relevant safety rules and regulations and have been trained to safely install, operate, maintain and repair the equipment. It is the responsibility of the company operating this equipment to ensure that its personnel meet these requirements.

Always use required personal protective equipment (PPE) and follow safe electrical work practices.

1.1.3 Intended Use



WARNING

Using this equipment in ways other than described in this manual may result in personal injury, death or property and equipment damage. Use this equipment only as described in this manual.

ADB Airfield Solutions cannot be responsible for injuries or damages resulting from nonstandard, unintended applications of its equipment. This equipment is designed and intended only for the purpose described in this manual. Uses not described in this manual are considered unintended uses and may result in serious personal injury, death or property and equipment damage. Unintended uses may result from taking the following actions:

- Making changes to equipment that are not recommended or described in this manual or using parts that are not genuine ADB Airfield Solutions replacement parts.
- Failing to make sure that auxiliary equipment complies with approval-agency requirements, local codes and all applicable safety standards.
- Using materials or auxiliary equipment that are inappropriate or incompatible with ADB Airfield Solutions equipment.
- Allowing unqualified personnel to perform any task.

1.1.4 Storage



CAUTION

If equipment is to be stored prior to installation, it must be protected from the weather and kept free of condensation and dust.

Failure to follow this instruction can result in injury or equipment damage.

1.1.4.1 Operation



WARNING

- Only qualified personnel, physically capable of operating the equipment and with no impairments in their judgment or reaction times, should operate this equipment.
- Read all system component manuals before operating this equipment. A thorough understanding of system components and their operation will help you operate the system safely and efficiently.
- Before starting this equipment, check all safety interlocks, fire-detection systems, and protective devices such as panels and covers. Make sure all devices are fully functional. Do not operate the system if these devices are not working properly. Do not deactivate or bypass automatic safety interlocks or locked-out electrical disconnects or pneumatic valves.
- Protect equipment with safety devices as specified by applicable safety regulations.
- If safety devices must be removed for installation, install them immediately after the work is completed and check them for proper functioning.
- Route electrical wiring along a protected path. Make sure they will not be damaged by moving equipment.
- Never operate equipment with a known malfunction.
- Do not attempt to operate or service electrical equipment if standing water is present.
- Use this equipment only in the environments for which it is rated. Do not operate this equipment in humid, flammable, or explosive environments unless it has been rated for safe operation in these environments.
- Never touch exposed electrical connections on equipment while the power is ON.

1.1.4.2 Material Handling Precautions



CAUTION

- This equipment may contain electrostatic sensitive devices.
- Protect from electrostatic discharge.
 - Electronic modules and components should be touched only when this is unavoidable e.g. soldering, replacement.
 - Before touching any component of the cabinet you should bring your body to the same potential as the cabinet by touching a conductive earthed part of the cabinet.
 - Electronic modules or components must not be brought in contact with highly insulating materials such as plastic sheets, synthetic fiber clothing. They must be laid down on conductive surfaces.
 - The tip of the soldering iron must be grounded.
 - Electronic modules and components must be stored and transported in conductive packing.

1.1.4.3 Action in the Event of a System or Component Malfunction



WARNING

- Do not operate a system that contains malfunctioning components. If a component malfunctions, turn the system OFF immediately.
- Disconnect and lock out electrical power.
- Allow only qualified personnel to make repairs. Repair or replace the malfunctioning component according to instructions provided in its manual.

1.1.4.4 Maintenance and Repair



WARNING

- Allow only qualified personnel to perform maintenance, troubleshooting, and repair tasks.
- Only persons who are properly trained and familiar with ADB Airfield Solutions equipment are permitted to service this equipment.
 - Disconnect and lock out electrical power.
 - Always use safety devices when working on this equipment.
 - Follow the recommended maintenance procedures in the product manuals.
 - Do not service or adjust any equipment unless another person trained in first aid and CPR is present.
 - Connect all disconnected equipment ground cables and wires after servicing equipment. Ground all conductive equipment.
 - Use only approved ADB Airfield Solutions replacement parts. Using unapproved parts or making unapproved modifications to equipment may void agency approvals and create safety hazards.
 - Check interlock systems periodically to ensure their effectiveness.
 - Do not attempt to service electrical equipment if standing water is present. Use caution when servicing electrical equipment in a high-humidity environment.
 - Use tools with insulated handles when working with electrical equipment.

2.0 Incandescent Elevated Runway Edge/Threshold Light

This section describes the L-862/L-862E high intensity runway/threshold lights. The ADB Airfield Solutions L-862 white-white, white-yellow, red-blue, or white-red light fixture is used for runway edge lighting. The L-862E light fixture with red-green, red-red, or green-green outer globe is used for runway threshold and runway end lighting.

2.1 About this manual

The manual shows the information necessary to:

- Install and maintain the ERET-CB elevated light.
1. Become familiar with the structure and content.
 2. Carry out the actions completely and in the given sequence.

2.1.1 How to work with the manual



2.1.2 Record of changes

| Page | Rev | Description | Checked | Approved | Date |
|-----------------------------|-----|--|---------|----------|----------|
| All | A | Released Manual | | | |
| 9, 10, 12, 18-22, 27, 33-34 | G | Updated Table 3, Required Equipment Not Supplied and Table 4 (Isolation Transformers). Updated assembly instructions by adding note about pre-assembly. Updated callouts in Figures 5 and 7. Updated stake and base mounting instructions. Updated ordering code in Figure 9. Added stake assembly parts list. | JY | WT | 9/4/02 |
| | H | Removed reference and p/n for 175W lamp | WT | WT | 4/24/06 |
| all | J | Updated Parts and Order number, ADB | ER | GM | 12/04/09 |
| 35 | K | Updated parts list | ER | GM | 12/01/10 |
| | L | Warranty update | | | 3/22/13 |
| All | M | Update format/add 200W and 120W lamp for L-862E | RW | JC | 7/08/14 |
| | | | | | |
| | | | | | |
| | | | | | |

2.1.3 Icons used in the manual

For all WARNING symbols see the Safety section.

Carefully read and observe all safety instructions in this manual, which alert you to safety hazards and conditions that may result in personal injury, death or property and equipment damage and are accompanied by the symbol shown below.

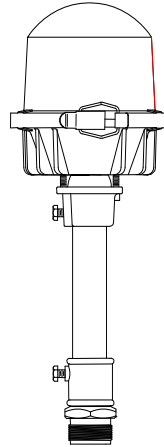
| | |
|---|--|
|  | <p>WARNING</p> <ul style="list-style-type: none"> • Failure to observe a warning may result in personal injury, death or equipment damage. |
|  | <p>CAUTION</p> <ul style="list-style-type: none"> • Failure to observe a caution may result in equipment damage. |

2.2 Introduction

This section describes the L-862/L-862E high intensity runway/threshold lights. The ADB Airfield Solutions L-862 white-white, white-yellow, red-blue, or white-red light fixture is used for runway edge lighting. The L-862E light fixture with red-green, red-red, or green-green outer globe is used for runway threshold and runway end lighting.

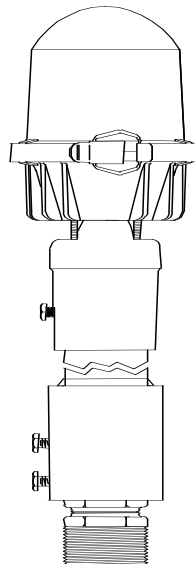
See Figure 1 for the standard L-862 light fixture with 1-in. column for installation in a base plate with a 1.5–12 threaded hub.

Figure 1: L-862/L-862E Light Fixture (Standard 1-in. [25.4-mm] Column)



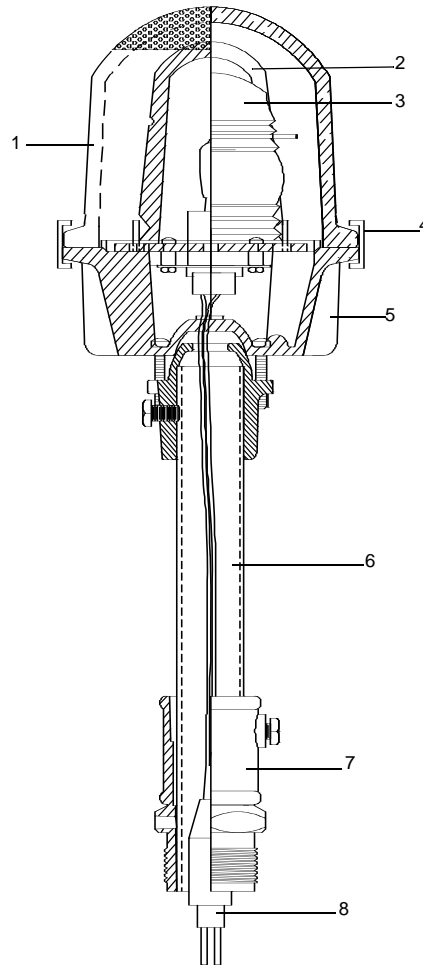
See Figure 2 for light fixture with optional 2-inch (50.8-mm) column assembly for installation in an L-867 base cover plate with a 2-inch (50.8-mm) threaded hub.

Figure 2: L-862/L-862E Light Fixture (2-in. [50.8-mm] Column)



See Figure 3. The L-862/L-862E light fixture consists of the following: a pair of inner lens doublets (3) coupled with an outer globe (1) continuous clamping band (4) inner spring clip (2) to hold two 180-degree inner lens segments frangible coupling (7) that threads into a 1-1/2–12 NPT tapped hole in either a 30-inch (762-mm) stake assembly or a 12-inch-diameter L-867 base cover plate.

Figure 3: Cutaway View of L-862/L-862E Light Fixture



- | | | |
|------------------------|---------------------|-----------------------|
| 1. Outer Globe | 4. Globe Clamp Band | 7. Frangible Coupling |
| 2. Inner Spring Clip | 5. Head Assembly | 8. L-823 Cordset |
| 3. Inner Lens Segments | 6. Column | |

The cast aluminum head and base assembly can be mounted on a standard L-867 base plate or on a steel stake. Base mounting is easier to maintain and provides added protection for the equipment. Stake-mounted lights require transformers, cables, and connectors that are designed for direct earth burial. Refer to Table 1 for mounting heights.

NOTE: The measurements in Table 1 are taken from the grade to the top of the light fixture.

Table 1: Mounting Heights

| Type | Height (in.) | Height (mm) |
|------------------------|--------------|-------------|
| Standard (FAA minimum) | 14 | 355.6 |
| Standard | 24 | 610 |
| Standard (FAA maximum) | 30 | 762 |

The L-862/L862E light fixture is available with bidirectional red-green, clear-yellow, red-yellow, green-yellow, clear, red, yellow, green, and blue lenses.

2.2.1 L-862/L-862E Light Fixture: Required Equipment

Refer to Table 2 for required equipment that is supplied. Refer to Table 3 for required equipment that is not supplied. Refer to the *Parts* section for ordering information.

Table 2: Required Equipment Supplied

| Description | Quantity |
|---|-------------|
| L-862/L-862E light fixture (includes lamp, column, frangible coupling, and L-823 cordset) | 1 |
| Instruction manual | 1 per order |

Table 3: Table 3. Required Equipment Not Supplied

| Description | Quantity |
|---|-------------|
| Torque wrench (0—200 inch-pounds) with 9/16 socket | 1 |
| Screwdriver, #2 Phillips | 1 |
| L-867 base plate (12 or 16 inches in diameter) and L-867 base when base mounted. | 1 |
| Stake assembly, 30-inch galvanized steel. Used only when fixture is stake mounted. | 1 |
| L-830 isolation transformer for series circuit. Refer to Table 4 for the appropriate transformer. | 1 |
| Single conductor (primary) connector kit | 1 |
| Loctite Grade AV or equivalent | As required |

Table 4: Table 4. Isolation Transformers

| For a... | When you use this lamp... | Then use this isolation transformer... |
|----------------------|---------------------------|--|
| 6.6 A series circuit | 100 W, 115W and 120 W | L-830-4, 100 W 6.6/6.6 |
| | 150 W, 200 W | L-830-6, 150 W, 6.6/6.6 |
| 20 A series circuit | 115 W/120 W | L-830-5, 100 W, 20/6.6 |
| | 150 W, 200 W | L-830-7, 150 W, 20/6.6 |

Table 5: Lamp use

| Assembly Order Code | Lamp Part Number | Lamp Description |
|---------------------|------------------|--------------------|
| 44A2071/0XXX | --- | NO LAMP |
| 44A2071/1XXX | 48A0069 | LAMP, 120W |
| 44A2071/2XXX | 48A0044 | LAMP, 150W |
| 44A2071/4XXX | 48A0145 | LAMP, 200W |
| 44A2071/5XXX | 48A0380 | LAMP, 100W, PKX30d |

2.2.2 Specifications

This subsection provides specifications for the L-862/L-862E light fixtures.

2.2.2.1 Input

6.6 amps

2.2.2.2 Lamp

Refer to Table 4.

Rated Lamp Life

500 hours (minimum)

2.2.2.3 Environmental Operating Conditions

The L-862/L-862E light fixture is designed to operate under the conditions presented below for temperature, wind, altitude, and relative humidity.

2.2.2.4 Temperature

±55 °C (-67 °F to +131 °F)

2.2.2.5 Wind

Velocities up to 350 mph (560 kph)

2.2.2.6 Altitude

Sea level to 10,000 feet (3000 m)

2.2.2.7 Relative Humidity

Up to 100 %

2.2.2.8 Exposed Materials

Protected with aviation yellow gloss alkyd enamel paint

2.2.2.9 Photometric Data

This subsection provides the following photometric data for the L-862/L-862E light fixture: minimum beam coverage, minimum average intensity, and lamp current and percent brightness.

2.2.2.10 Minimum Beam Coverage

-2 to +9 degrees horizontal

+0 to +7 degrees vertical

2.2.2.11 Minimum Average Intensity

Refer to Table 5 for minimum average intensity.

Table 5. Minimum Average Intensity

| Lens | Input Power | Minimum Average Intensity (Candelas) |
|--------|-------------|--------------------------------------|
| White | 6.6 A | 10,000 |
| Yellow | 6.6 A | 5,000 |
| Red | 6.6 A | 2,000 |
| Blue | 6.6 A | 200 |
| Green | 6.6 A | 3200 |

2.2.2.12 Lamp Current and Percent Brightness

Refer to Table 6 for lamp current and percent brightness.

Table 6: Table 6. Lamp Current and Percent Brightness

| Lamp Current (Amperes) | Percent Brightness |
|------------------------|--------------------|
| 6.6 | 100 |
| 5.2 | 25 |
| 4.1 | 5 |
| 3.4 | 1.2 |
| 2.8 | 0.15 |

2.3 Installation



WARNING

Allow only qualified personnel to perform the following tasks. Observe and follow the safety instructions in this document and all other related documentation.

Using this equipment in ways other than described in this manual may result in personal injury, death or property and equipment damage. Use this equipment only as described in this manual.

2.3.1 Introduction

This section provides instructions for installing the L-862/L-862E light fixture. Refer to the airport project plans and specifications for the specific installation instructions.

2.3.2 Unpacking

The equipment is shipped ready for installation. Handle equipment very carefully to prevent component damage. Unpack the carton upon receipt and check the contents and their condition. Note any exterior damage to the carton that might lead to detection of equipment damage.

If you note any damage to any equipment, file a claim with the carrier immediately. The carrier may need to inspect the equipment.

2.3.3 Assembly Instructions

This subsection describes procedures for assembling the L-862/L-862E light fixture.

NOTE: Check the packing list with the parts list to verify that all parts are present before proceeding. Refer to the *Parts* section.

NOTE: The light fixtures are completely assembled at the factory. Use the assembly instructions below if assembly for repair or maintenance is necessary.

To assemble the parts, perform the following procedure:

1. See Figure 3. Place the L-823 cordset into the column.
2. See Figure 4. Insert the column into the end of the lower casting of the head assembly. Secure the head to the column by tightening the Phillips head screws. Apply Loctite to the Phillips head screws and hex head screws.
3. Insert the end of the column into the frangible coupling and secure by tightening the hex head screw.



WARNING

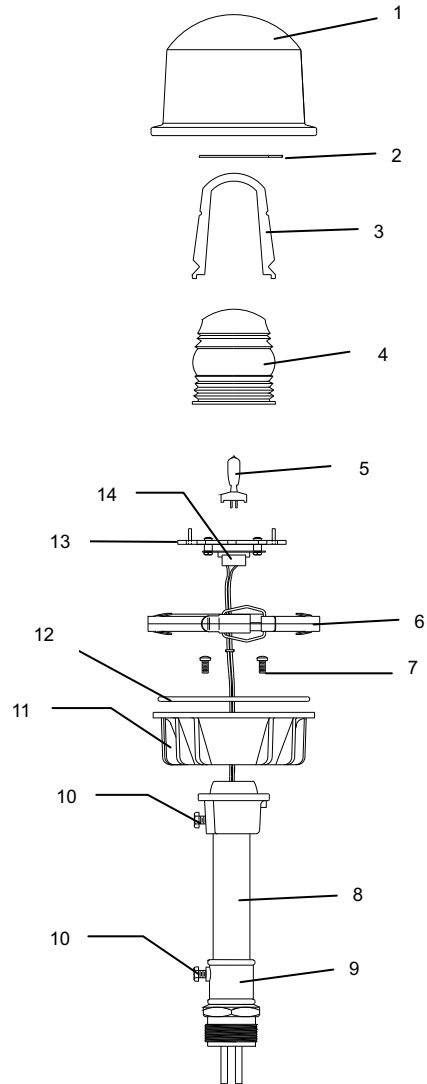
Do not install lamp, inner lenses, and lens assembly until you have mounted the fixture on a stake or base plate for the L-867 base. If you do not mount the fixture first, you may twist the cordset off the socket or break the socket prongs. Refer to Base Mounting and Stake Mounting in this section.

Insert the lamp into the socket. Refer to the Repair section.

Touching quartz lamps with bare fingers may seriously shorten lamp life. If the lamp is accidentally touched with bare fingers, clean with a tissue moistened with isopropyl alcohol.

4. Install the inner lens segments using the lens divider and inner spring clip against the socket plate.
5. Place the outer globe on the base and secure by tightening the lens clamp band.

Figure 4: L-862/L-862E Light Fixture Assembly



- | | | |
|------------------------|------------------------|------------------------------------|
| 1. Outer Globe | 5. Lamp | 10. Hex Head Screw |
| 2. Inner Spring Clip | 6. Lens Clamp Band | 11. Lower Casting of Head Assembly |
| 3. Lens Divider | 7. Phillips Head Screw | 12. Gasket |
| 4. Inner Lens Segments | 8. Column | 13. Socket Plate |
| | 9. Frangible Coupling | 14. Socket |

2.3.4 Placement

The L-862 edge light fixtures are located 2–10 feet (.61–3.048 m) from the edge of the full strength pavement runway and in a straight line on each side of the runway. The fixtures are spaced longitudinally not more than 200 feet (61 m) apart on a line such that the light units on opposite sides of the runway are perpendicular to the runway centerline. Refer to FAA Advisory Circular AC 150/5340-24 for detailed installation instruction.

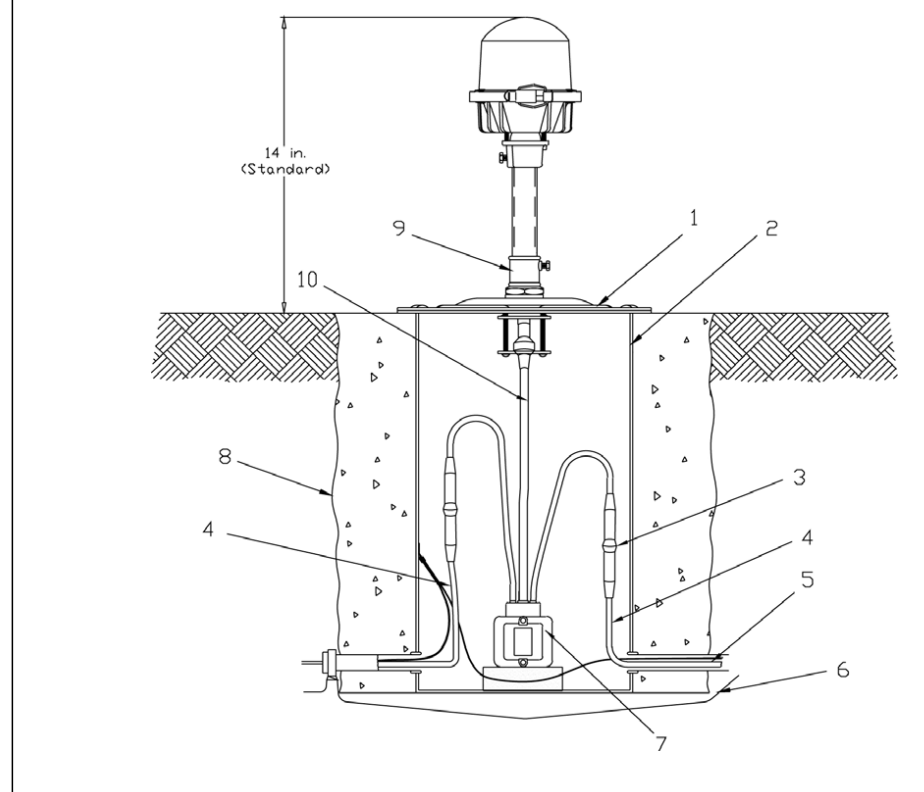
The L-862E runway threshold light fixtures are located perpendicular to the runway centerline and parallel to the displaced threshold. The L-862E runway end light fixtures are located perpendicular to the runway centerline and parallel with the end of the runway. Refer to FAA Advisory Circular.

Installation

2.3.5 Base Mounting

See Figure 5. The L-862/L862E light fixtures can be mounted on an L-867 base mated with a base plate with a diameter and bolt-hole circle corresponding to either a 12-inch (304.8-mm) or 16-inch (406.4-mm) L-867 base. The base plate has a female thread to receive a frangible coupling. A gasket is used with the base plate to form a watertight seal between the base plate and the L-867 base.

Figure 5: Base Mounting



- | | |
|---|--|
| 1. Base Plate | 6. Optional Bare Copper Counterpoise Wire |
| 2. L-867 Base | 7. L-830 Transformer |
| 3. L-823 Primary Connector | 8. Four-Inch Concrete Backfill Recommended |
| 4. Two-foot Slack for Connections (Minimum) | 9. Frangible Coupling and Disconnect Plug |
| 5. KV, L-824 Cable | 10. L-823 Secondary Connector |

To install the light fixture on the L-867 base, perform the following procedure:

1. See Figure 5. Install the L-867 base on undisturbed soil. If the soil is unsuitable, remove soil to an adequate depth and replace with compacted acceptable material.

NOTE: In closed duct systems, install in soil conditions with good drainage. Use light bases having a drain hole to prevent water accumulation.

2. Orient the cable entrance hubs of the base in the proper directions.
3. Level the light base so that the mounting flange surface is level with the finished grade.
4. With the base at the proper orientation and held at proper elevation, place approximately 4 inches (10.16 cm) of concrete backfill around the outside base.

NOTE: If the concrete backfill is omitted, the earth backfill must be compacted to maintain proper elevation and orientation of the base.

5. Slope the top of the concrete away from the flange portion of the base so the sloped outer edges of the concrete are at surface grade.

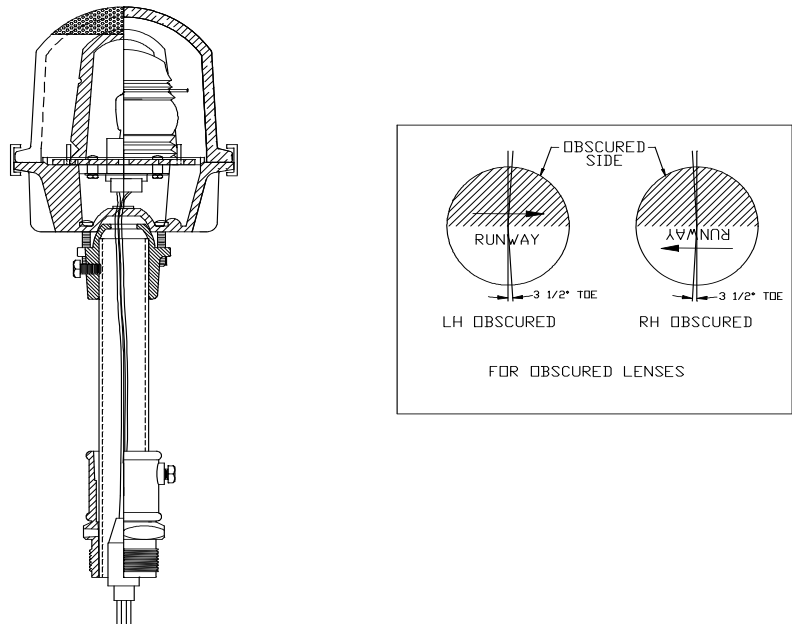
- To install the light fixture on the base, connect the primary power line to the appropriate L-830 isolation transformer. Refer to Table 4 for the appropriate transformer.

NOTE: Use a brick to raise the isolation transformer so that it is about 3 inches (76.2 mm) above the bottom surface of the L-867 base to avoid the possibility of the transformer being partially immersed in water in case water accumulates under the level of the ducts or pipes.

- After you have connected the transformer, check the continuity of the series loop.
- Wrap the connector joints in the primary circuit with at least one layer of rubber or synthetic rubber tape and one layer of plastic tape one-half lapped, extending at least 1-1/2 inches (3.81 mm) on each side of the joint.
- Clamp the female secondary plug from the L-830 transformer to the L-867 base plate fitting.
- Bolt the base plate with the base plate gasket to the L-867 base using six 3/8–16 stainless steel bolts. Apply a drop of Loctite Grade AV to each bolt thread and use a torque wrench to torque bolts to 100 inch-pounds (11.3 N•m).
- Connect the male L-823 plug from the light fixture to the female transformer plug on the secondary lead of the L-830 transformer.
- See Figure 4. Loosen the frangible coupling screw (10) holding the coupling to the light fixture column. Screw the coupling into the female thread on the base plate.
- Install the column with light fixture attached on the frangible coupling and tighten the coupling screw. Refer to *Assembly Instructions* in this section.
- Remove the outer globe, if installed. Place a level (such as a circle bubble level) on top of the head assembly and level the light fixture by adjusting the four Phillips head screws in the lower casting.
- See Figure 6. Place the outer globe on the fixture, and check for outer globe and inner lens direction.

NOTE: To verify that the lens is oriented correctly, the arrows on top of the lens must point to the runway side. Arrows should point toward the runway when the fixture is installed parallel with the runway or when the fixtures are installed perpendicular to the runway to mark a displaced threshold. When fixtures are located at the end of the runway, the arrows should point to the imaginary extension of the runway centerline. Always make sure that the colored lens location is in compliance with the airport project plans and specifications.

Figure 6: Outer Globe and Inner Lens Direction



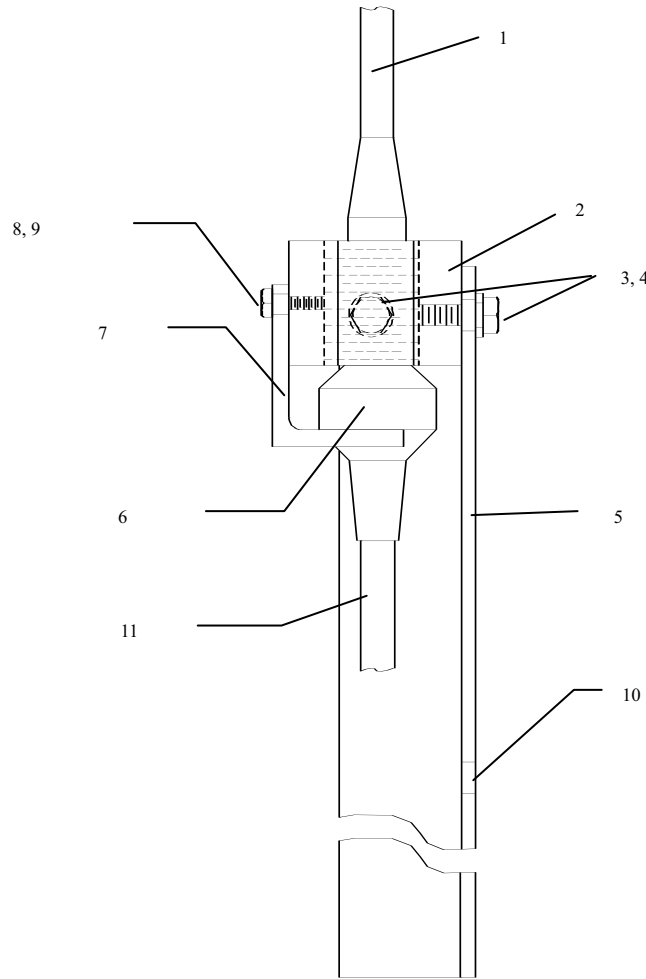
2.3.6 Stake Mounting

Mount the column light fixtures on 30-inch (762-mm) galvanized steel stakes with a fitting attached to the top of each stake to receive the male thread of the frangible coupling. Stake mounting requires cables and connections that are designed for direct earth burial. Install according to appropriate FAA and local contractor specifications.

To mount the L-862 light fixture on a stake, perform the following procedure:

1. See Figure 7. Assemble the stake by attaching the stake hub to the metal stake using two 3/8-16 x 3/4-in. hex head screws and 3/8-in. lockwashers.

Figure 7: Stake Assembly



- | | | | | | |
|----|-----------------|----|-----------------------------------|-----|----------------------------|
| 1. | L-823 Male Plug | 5. | Metal Stake | 9. | Lockwasher |
| 2. | Stake Hub | 6. | Transformer Secondary Female Plug | 10. | Grounding Screw Hole |
| 3. | Hex Head Screw | 7. | Cable Connector Support | 11. | Transformer Secondary Lead |
| 4. | Lockwasher | 8. | Hex Head Screw | | |

2. See Figure 8. Install the stake in 6-inch (152.4-mm) diameter holes in the ground at a depth of 30 inches (762 mm) so that the mounting hub (8) of the stake is level.

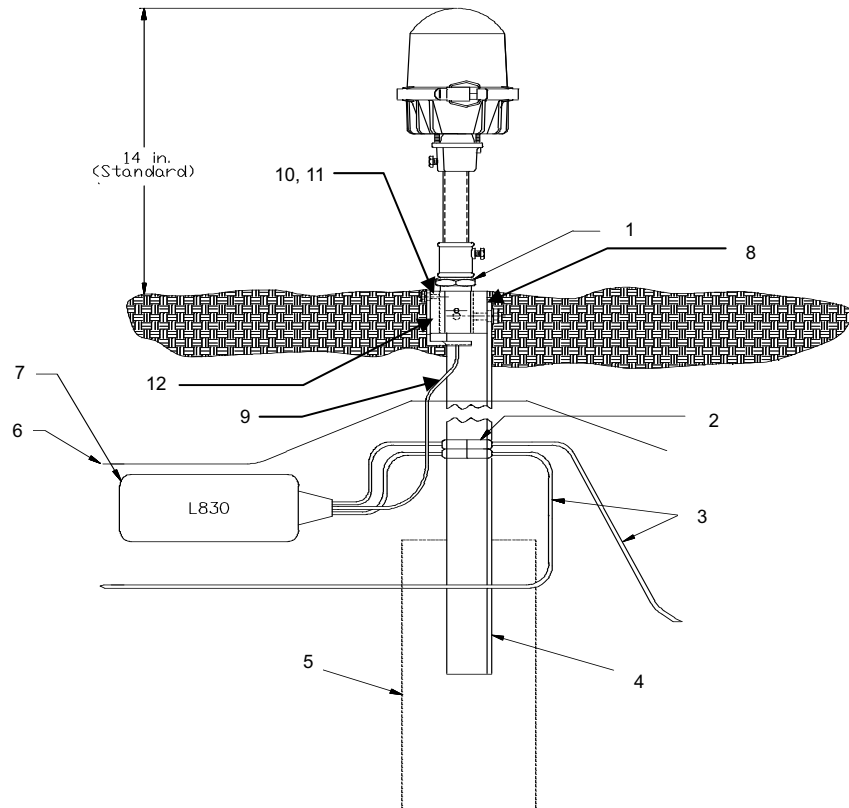
NOTE: The top of the stake should be even with the ground within one degree of the vertical. In areas where frost may cause heaving, anchor the stake with concrete and use a permeable backfill material such as sand around the buried electrical components. Cover the top surface with an impervious material to reduce moisture penetration.



WARNING

Do not drive stakes. Driving stakes may damage the stake and cause light fixture misalignment. Refer to FAA specification AC 150/5340-30.

Figure 8: Stake Mounting



- | | |
|---|-------------------------------|
| 1. Frangible Coupling and Disconnect Plug | 7. L-830 Transformer |
| 2. Connectors | 8. Stake Hub |
| 3. 5 KV, L-824 Cable | 9. Transformer Secondary Plug |
| 4. Metal Stake (30 in.) | 10. Hex Head Screw |
| 5. Concrete Anchor (Recommended 6 x 6 x 12-in.) | 11. Lockwasher |
| 6. Optional Bare Copper Counterpoise Wire | 12. Cable Connector Support |

3. Backfill around the stake with compacted earth passing a 1-inch (25.4 mm) sieve.

NOTE: Use a bubble level or carpenter's level to ensure the stake is vertical before backfilling around stake. Backfill with concrete in case of unstable soil conditions.

4. Make electrical connections by installing the transformer primary cables to the field circuit. Then insert the transformer secondary plug in the cable connector support's forked tine and attach the cable connector support to the stake hub using 1/4-20 x 3/4-in. hex head screw and 1/4-in. split lockwasher.

NOTE: The small hole at the lower end of the stake is provided for counterpoise wire connection.

5. Install the light fixture on the stake.

Installation

2.4 Maintenance



WARNING

Allow only qualified personnel to perform maintenance, troubleshooting, and repair tasks.

- Only persons who are properly trained and familiar with ADB Airfield Solutions equipment are permitted to service this equipment.
- Disconnect and lock out electrical power.
- Always use safety devices when working on this equipment.
- Follow the recommended maintenance procedures in the product manuals.
- Do not service or adjust any equipment unless another person trained in first aid and CPR is present.
- Connect all disconnected equipment ground cables and wires after servicing equipment. Ground all conductive equipment.
- Use only approved ADB Airfield Solutions replacement parts. Using unapproved parts or making unapproved modifications to equipment may void agency approvals and create safety hazards.
- Check interlock systems periodically to ensure their effectiveness.
- Do not attempt to service electrical equipment if standing water is present. Use caution when servicing electrical equipment in a high-humidity environment.
- Use tools with insulated handles when working with electrical equipment.

To keep L-862/L862E light fixtures operating efficiently, follow a preventive maintenance schedule. Refer to Table 7. Refer to FAA AC 150/5340-26 for more detailed information.

Table 7: L-862 Light Fixture Maintenance

| Interval | Maintenance Task | Action |
|---------------|--|--|
| Daily | Check for burned out lamp. | After turning off power, replace burned-out lamps. Refer to the <i>Repair</i> section. |
| | Check for dim lamp. | After turning off power, replace burned-out lamps. Check isolation transformer on series circuit. Refer to the <i>Repair</i> section. |
| | Check for broken lens. | Replace lens or lens assembly. |
| Weekly | Check for vegetation. | Remove vegetation. Use weed killer. |
| | Check for dirty lens. | Clean with glass cleaner. |
| Monthly | Check for misaligned fixture. | Straighten, level, and align. |
| | Check for dirty lamp socket. | After turning off power, clean lamp socket. |
| | Check for dirty frangible coupling weep holes (stake-mounted fixtures only). | Clean frangible coupling weep holes. |
| | Check for dirt on fixture drain holes. | Clean drain holes. |
| Semi-Annually | Check for improper ground elevation. | Grade so frangible point is level with ground elevation. |
| | Check for improper light elevation. | Maintain the same elevation for all light fixtures. |
| | Check for moisture present in light housing or on L-867 base. | Check drain holes and clamps for dirt. Clean drain holes and clamps, if necessary. Check lens for cracks. If damaged, replace. Use water pump to remove water from the base. |
| | Check for corrosion or loose or chipped paint. | Scrape and repaint. |
| Annually | Check for cracks, corrosion, and shorts. | Repair or replace. |
| | Check for dirty contacts. | After turning off the power, clean contacts. |
| | Check for loose wire connections. | Tighten wire connections. |
| Unscheduled | Make prediction of heavy snowfall, if necessary. | Use red flags or sticks to mark the location of fixtures to facilitate snow removal and lessen the chance of damage to fixtures by snow removal equipment. |

2.5 Troubleshooting



WARNING

Allow only qualified personnel to perform maintenance, troubleshooting, and repair tasks.

- Only persons who are properly trained and familiar with ADB Airfield Solutions equipment are permitted to service this equipment.
- Disconnect and lock out electrical power.
- Always use safety devices when working on this equipment.
- Follow the recommended maintenance procedures in the product manuals.
- Do not service or adjust any equipment unless another person trained in first aid and CPR is present.
- Connect all disconnected equipment ground cables and wires after servicing equipment. Ground all conductive equipment.
- Use only approved ADB Airfield Solutions replacement parts. Using unapproved parts or making unapproved modifications to equipment may void agency approvals and create safety hazards.
- Check interlock systems periodically to ensure their effectiveness.
- Do not attempt to service electrical equipment if standing water is present. Use caution when servicing electrical equipment in a high-humidity environment.
- Use tools with insulated handles when working with electrical equipment.

This section contains troubleshooting information. This information covers only the most common problems that you may encounter. If you cannot solve the problem with the information given here, contact your local ADB Airfield Solutions representative for help.

| Problem | Possible Cause | Corrective Action |
|----------------------|------------------------------|--|
| Lamps not turning on | Defective lamp | Replace lamp. Refer to <i>Lamp Replacement</i> in the <i>Repair</i> section. |
| | Loose wire connection(s) | Tighten wire connection(s). |
| | Isolation transformer bad | Replace transformer. |
| | Deteriorated wire insulation | Replace wires. |
| | Moisture present in fixture | Open up and dry. Inspect lens for cracks. Replace lamp and any damaged parts. Refer to <i>Lamp Replacement</i> in the <i>Repair</i> section. |

2.5.1 Repair

2.5.1.1 Lamp Replacement

This section provides instructions for replacing lamps for the L-862/L-862E light fixtures.

To replace a lamp, perform the following procedure:

1. See Figure 4. Remove the outer globe from the fixture by loosening the clamp band (6) holding the lens to the base.
2. Remove the two inner lens segments by unclipping the inner spring clip.
3. Pull the lamp from the socket.
4. Wearing clean, lint-free gloves, insert the new 2-pin lamp into the lamp socket.



WARNING

- Touching quartz lamps with bare fingers may seriously shorten lamp life. If the quartz lamp has been touched, clean the lamp with tissue moistened with isopropyl alcohol.

5. Reinstall the inner lens segments and outer globe by reversing the removal procedure.

2.6 Parts

To order parts, call ADB Airfield Solutions Customer Service or your local representative. Use this five-column parts list, and the accompanying illustration, to describe and locate parts correctly.

Figure 9: L-862/L-862E Light Fixture Ordering Code

L-862E Ordering Code

Lamp

- 1 = 120 W/6.6 A Quartz
- 4 = 200 W/6.6 A Quartz (ETL Certified)

Inner Lens Color

- 1 = White/white

Fixture Height

- 1 = 14 in (35.6 cm) with 1.5" coupling, 12 TPI
- 2 = 24 in (61.0 cm) with 1.5" coupling, 12 TPI
- 3 = 30 in (76.2 cm) with 1.5" coupling, 12 TPI
- 4 = 14 in (35.66 cm) with 2" column/coupling, 11.5 TPI¹
- 5 = 24 in (61.0 cm) with 2" column/coupling, 11.5 TPI¹
- 6 = 30 in (76.2 cm) with 2" column/coupling, 11.5 TPI¹
- 7 = 14 in (35.6 cm) with 1" column/2" coupling, 11.5 TPI

Outer Lens

- 4 = Red/Green Right Hand (ETL Certified)
- 5 = Red/Green Left Hand (ETL Certified)
- 6 = Red/Red (ETL Certified)
- 7 = Green/Obscured Right Hand (ETL Certified)
- 8 = Green/Obscured Left Hand (ETL Certified)
- 9 = Red/Obscured Right Hand (ETL Certified)
- 0 = Red/Obscured Left Hand (ETL Certified)

Notes for L-862 and L-862E

See Ordering Code for ETL Certification

- ¹ This option is for a fixture with 2-inch column where robust applications are required.
- ² Color and/or color configuration not recognized by the FAA
- ³ When ordering fixtures with two different inner lens colors, indicate the number of fixtures to be toed left and the number to be toed right. Unless specified, order will be filled with half right toed and half left toed fixtures.
- ⁴ For 200 W lamps, inner lenses must be white or white/yellow.
- ⁵ For 100 W, 120 W and 150 W lamps, outer lenses must be white.

L-862 Ordering Code

Lamp

- 0 = None
- 1 = 120 W/6.6 A Quartz⁵
- 2 = 150 W/6.6 A Quartz (ETL Certified)⁵
- 4 = 200 W/6.6 A Quartz (ETL Certified)⁴
- 5 = 100 W/6.6 A, PK30d⁵

Inner Lens Color

- 0 = None
- 1 = Birectional White/White (ETL Certified)
- 2 = Birectional White/Yellow (ETL Certified)³
- 3 = Red/Red²
- 4 = Yellow/Yellow²
- 5 = Green/Green²
- 7 = Birectional Red/Yellow (ETL Certified)³
- 8 = Birectional Yellow/Green³
- A = Birectional White/Red (ETL Certified)³

Fixture Height

- 1 = 14 in (35.6 cm) with 1.5" coupling, 12 TPI
- 2 = 24 in (61.0 cm) with 1.5" coupling, 12 TPI
- 3 = 30 in (76.2 cm) with 1.5" coupling, 12 TPI
- 4 = 14 in (35.66 cm) with 2" swivel head, 11.5 TPI¹
- 5 = 24 in (61.0 cm) with 2" swivel head, 11.5 TPI¹
- 6 = 30 in (76.2 cm) with 2" swivel head, 11.5 TPI¹
- 7 = 14 in (35.6 cm) with 2" coupling, 11.5 TPI

Outer Lens

- 1 = White/White (ETL Certified)
- 9 = Red/Obscured Right Hand (ETL Certified)
- 0 = Red/Obscured Left Hand (ETL Certified)
- A = Red/White Right Hand (ETL Certified)
- B = Red/White Left Hand (ETL Certified)
- C = Yellow/Green Right Hand (ETL Certified)
- D = Yellow/Green Left Hand (ETL Certified)
- E = Red/Yellow Right Hand (ETL Certified)
- F = Red/Yellow Left Hand (ETL Certified)

Figure 10 shows how to determine the part number for a particular L-862 light fixture.

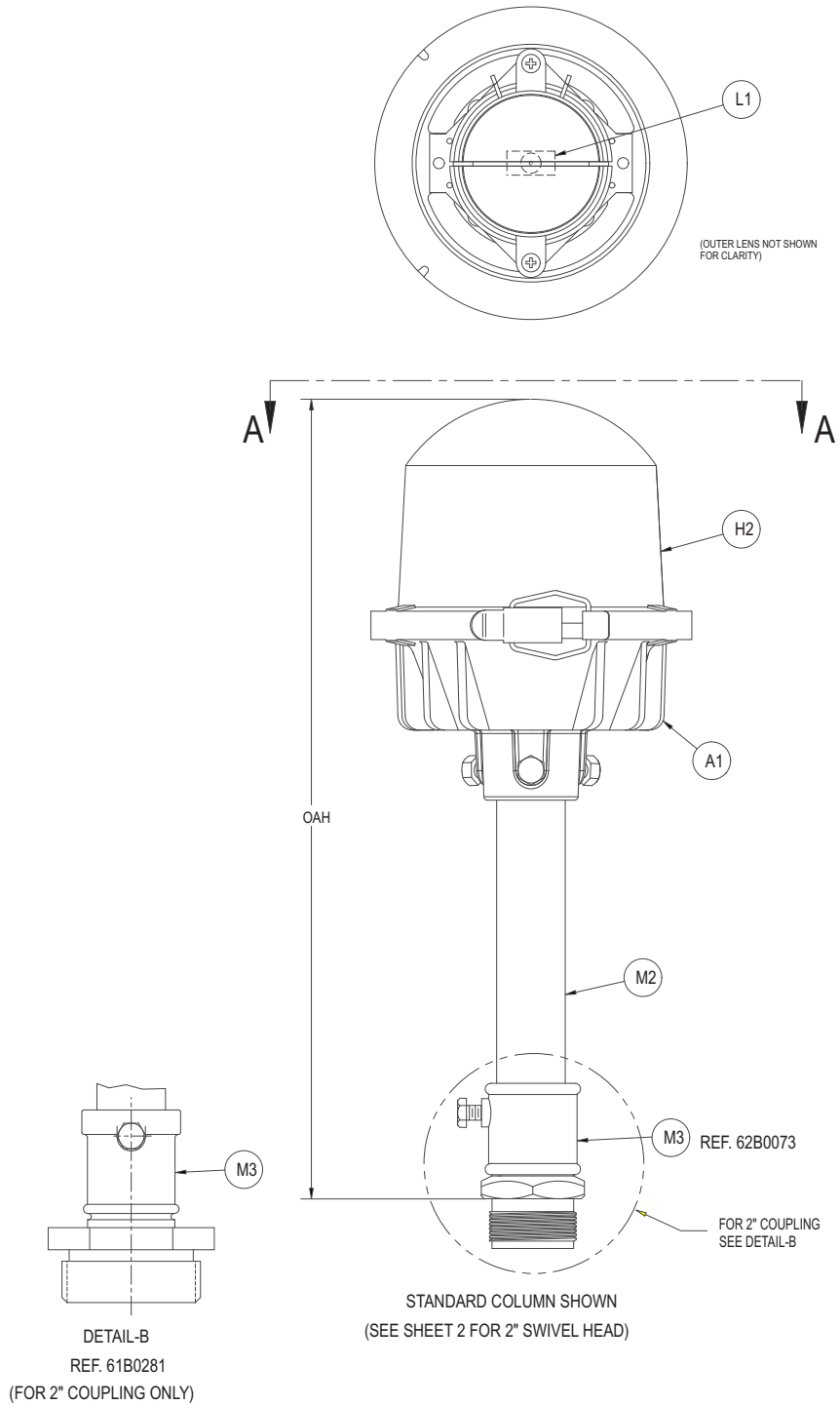
Figure 11 shows how to determine the part number for a particular L-862E light fixture.

Table 8: Lamp use

| Assembly Order Code | Lamp Part Number | Lamp Description |
|---------------------|------------------|--------------------|
| 44A2071/0XXX | --- | NO LAMP |
| 44A2071/1XXX | 48A0069 | LAMP, 120W |
| 44A2071/2XXX | 48A0044 | LAMP, 150W |
| 44A2071/4XXX | 48A0145 | LAMP, 200W |
| 44A2071/5XXX | 48A0380 | LAMP, 100W, PKX30d |

2.6.0.1 44A2071- X 1 X X
*ETL certified.

Figure 10: L-862 Light Fixture Ordering Code



Parts

Table 9: See Figure 10 and Figure 11, Inner Lens Assembly

| ASSEMBLY NUMBER | PART NUMBER | ITEM NO. | PART NAME/DESCRIPTION | QTY. |
|-----------------|-------------|----------|-----------------------|------|
| 44A2071/X0XX | - | H1L | (NO LENS) | 0 |
| | - | H1R | (NO LENS) | 0 |
| 44A2071/X1XX | 63B0415/1 | H1L | INNER LENS, CLEAR | 1 |
| | 63B0415/1 | H1R | INNER LENS, CLEAR | 1 |
| 44A2071/X2XX | 63B0415/1 | H1L | INNER LENS, CLEAR | 1 |
| | 63B0415/2 | H1R | INNER LENS, YELLOW | 1 |
| 44A2071/X3XX | 63B0415/3 | H1L | INNER LENS, RED | 1 |
| | 63B0415/3 | H1R | INNER LENS, RED | 1 |
| 44A2071/X4XX | 63B0415/2 | H1L | INNER LENS, YELLOW | 1 |
| | 63B0415/2 | H1R | INNER LENS, YELLOW | 1 |
| 44A2071/X5XX | 63B0415/4 | H1L | INNER LENS, GREEN | 1 |
| | 63B0415/4 | H1R | INNER LENS, GREEN | 1 |
| 44A2071/X6XX | 63B0415/3 | H1L | INNER LENS, RED | 1 |
| | 63B0415/4 | H1R | INNER LENS, GREEN | 1 |
| 44A2071/X7XX | 63B0415/3 | H1L | INNER LENS, RED | 1 |
| | 63B0415/2 | H1R | INNER LENS, YELLOW | 1 |
| 44A2071/X8XX | 63B0415/4 | H1L | INNER LENS, GREEN | 1 |
| | 63B0415/2 | H1R | INNER LENS, YELLOW | 1 |
| 44A2071/X9XX | 63B0415/5 | H1L | INNER LENS, BLUE | 1 |
| | 63B0415/5 | H1R | INNER LENS, BLUE | 1 |
| 44A2071/XAXX | 63B0415/1 | H1L | INNER LENS, CLEAR | 1 |
| | 63B0415/3 | H1R | INNER LENS, RED | 1 |
| 44A2071/XBXX | 63B0415/5 | H1L | INNER LENS, BLUE | 1 |
| | 63B0415/3 | H1R | INNER LENS, RED | 1 |
| 44A2071/XCXX | 63B0415/2 | H1L | INNER LENS, YELLOW | 1 |
| | 63B0415/5 | H1R | INNER LENS, BLUE | 1 |

Table 10: See Figure 10, Head and Column Assembly

| ASSEMBLY NUMBER | PART NUMBER | ITEM NO. | PART NAME/DESCRIPTION | QTY. |
|-----------------|-------------|----------|-----------------------------------|------|
| 44A2071/XX1X | 44A2066/1 | A1 | HEAD ASSY FOR 14" OAH | 1 |
| 44A2071/XX7X | 62A0007/7 | M2 | 7 1/4" COLUMN FOR 14" OAH | 1 |
| 44A2071/XX2X | 44A2066/2 | A1 | HEAD ASSY FOR 24" OAH | 1 |
| 44A2071/XX8X | 62A0007/17 | M2 | 17 1/4" COLUMN FOR 24" OAH | 1 |
| 44A2071/XX3X | 44A2066/3 | A1 | HEAD ASSY FOR 30" OAH | 1 |
| 44A2071/XX9X | 62A0007/23 | M2 | 23 1/4" COLUMN FOR 30" OAH | 1 |
| 44A2071/XXAX | 44A6241/1 | A1 | L862Q HEAD ASY 14" OAH PK30d LAMP | 1 |
| | 62A0007/7 | M2 | 7 1/4" COLUMN FOR 14" OAH | 1 |
| 44A2071/XXBX | 44A6241/2 | A1 | L862Q HEAD ASY 24" OAH PK30d LAMP | 1 |
| | 62A0007/17 | M2 | 17 1/4" COLUMN FOR 24" OAH | 1 |
| 44A2071/XXCX | 44A6241/3 | A1 | L862Q HEAD ASY 30" OAH PK30d LAMP | 1 |
| | 62A0007/23 | M2 | 23 1/4" COLUMN FOR 30" OAH | 1 |

Table 11: See Figure 11, Head and Column Assembly

| | | | | |
|--------------|-----------|----|-----------------------------------|---|
| 44A2071/XX4X | 44A2066/4 | A1 | HEAD ASSY FOR 14" OAH | 1 |
| | 44A0907/3 | M2 | EXTENSION FOR 14" OAH | 1 |
| 44A2071/XX5X | 44A2066/5 | A1 | HEAD ASSY FOR 24" OAH | 1 |
| | 44A0907/4 | M2 | EXTENSION FOR 24" OAH | 1 |
| 44A2071/XX6X | 44A2066/6 | A1 | HEAD ASSY FOR 30" OAH | 1 |
| | 44A0907/5 | M2 | EXTENSION FOR 30" OAH | 1 |
| 44A2071/XXDX | 44A6241/4 | A1 | L862Q HEAD ASY 14" OAH PK30d LAMP | 1 |
| | 44A0907/3 | M2 | L862Q EXT FOR 14" OAH | 1 |
| 44A2071/XXEX | 44A6241/5 | A1 | L862Q HEAD ASY 24" OAH PK30d LAMP | 1 |
| | 44A0907/4 | M2 | L862Q EXT FOR 24" OAH | 1 |
| 44A2071/XXFX | 44A6241/6 | A1 | L862Q HEAD ASY 30" OAH PK30d LAMP | 1 |
| | 44A0907/5 | M2 | L862Q EXT FOR 30" OAH | 1 |

Table 12: See Figure 10 and Figure 11, Outer Lens Assemblies

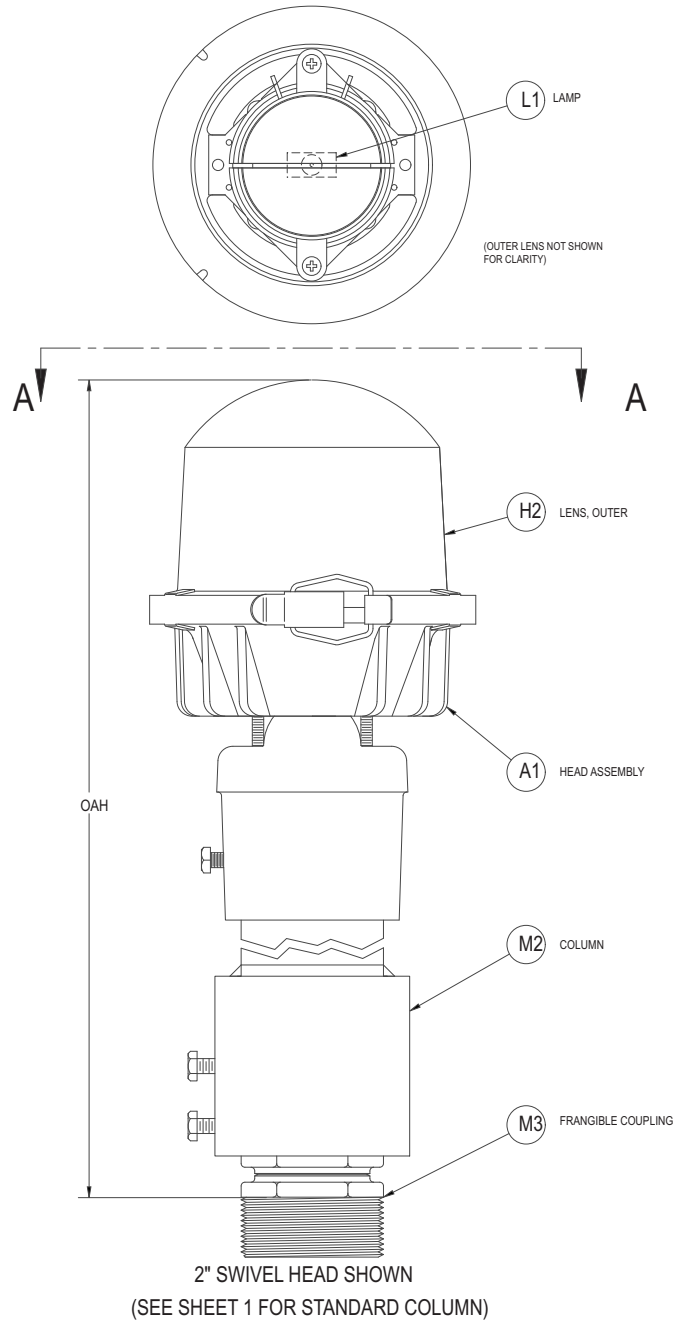
| ASSEMBLY NUMBER | PART NUMBER | ITEM NO. | PART NAME/DESCRIPTION | QTY. |
|-----------------|-------------|----------|--------------------------------|------|
| 44A2071/XXX1 | 63B0416 | H2 | OUTER LENS, CLEAR | 1 |
| 44A2071/XXX2 | 63B0545/1 | H2 | OUTER LENS, OBSCURED LH* | 1 |
| 44A2071/XXX3 | 63B0545/2 | H2 | OUTER LENS, OBSCURED RH* | 1 |
| 44A2071/XXX4 | 63A0601 | H2 | OUTER LENS, RED/GREEN RH* | 1 |
| 44A2071/XXX5 | 63A0602 | H2 | OUTER LENS, RED GREEN LH* | 1 |
| 44A2071/XXX6 | 63A0607 | H2 | OUTER LENS, RED/RED | 1 |
| 44A2071/XXX7 | 63A0606/2 | H2 | OUTER LENS, GREEN/OBSCURED, RH | 1 |
| 44A2071/XXX8 | 63A0606/1 | H2 | OUTER LENS, GREEN/OBSCURED, LH | 1 |
| 44A2071/XXX9 | 63A0608/2 | H2 | OUTER LENS, RED/OBSCURED, RH | 1 |
| 44A2071/XXX0 | 63A0608/1 | H2 | OUTER LENS, RED/OBSCURED, LH | 1 |
| 44A2071/XXXA | 63A1057/1 | H2 | OUTER LENS, RED/CLEAR, RH | 1 |
| 44A2071/XXXB | 63A1057/2 | H2 | OUTER LENS, CLEAR/RED, LH | 1 |
| 44A2071/XXXC | 63A1105/1 | H2 | OUTER LENS, YELLOW/GREEN, RH | 1 |
| 44A2071/XXXD | 63A1105/2 | H2 | OUTER LENS, YELLOW/GREEN, LH | 1 |
| 44A2071/XXXE | 63A1105/3 | H2 | OUTER LENS, RED/YELLOW, RH | 1 |
| 44A2071/XXXF | 63A1105/4 | H2 | OUTER LENS, RED/YELLOW, LH | 1 |

Table 13: See Figure 10 and Figure 11, Coupling

| ASSEMBLY NUMBER | PART NUMBER | ITEM NO. | PART NAME/DESCRIPTION | QTY. |
|-----------------|-------------|----------|-----------------------------|------|
| 44A2071/XX1X | 62B0073 | M3 | 14" OAH, 1-1/2" COUPLING | 1 |
| 44A2071/XX2X | 62B0073 | M3 | 24" OAH, 1-1/2" COUPLING | 1 |
| 44A2071/XX3X | 62B0073 | M3 | 30" OAH, 1-1/2" COUPLING | 1 |
| 44A2071/XX7X | 61A0281 | M3 | 14" OAH, 2" COUPLING | 1 |
| 44A2071/XX8X | 61A0281 | M3 | 24" OAH, 2" COUPLING | 1 |
| 44A2071/XX9X | 61A0281 | M3 | 30" OAH, 2" COUPLING | 1 |
| 44A2071/XXGX | 61A0350 | M3 | 14" OAH, 2" 11 TPI COUPLING | 1 |

Parts

Figure 11: L-862E Light Fixture Ordering Code

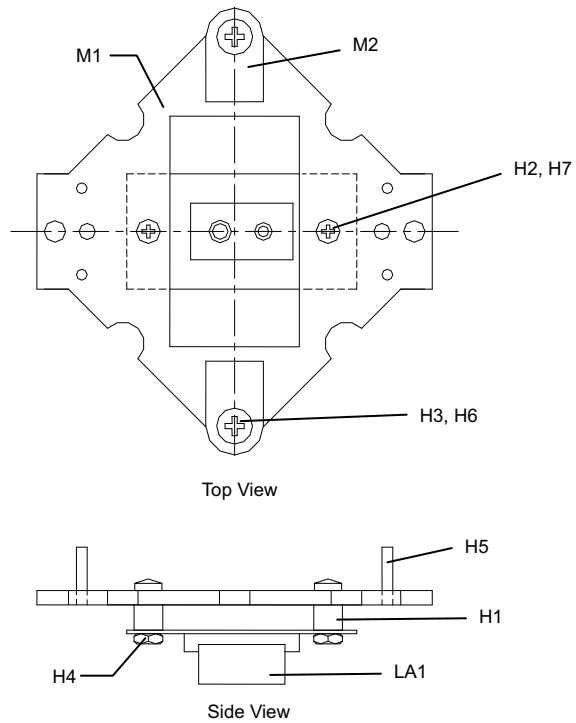


2.6.1 Socket Mounting Plate Assembly Parts List

See Figure 12. The socket mounting plate assembly part number is 44A2089.

| Item | Description | Part Number | Quantity |
|------|---------------------------------|-------------|----------|
| M2 | Filter clip, L-862 | 60C2041 | 2 |
| H1 | Spacer | 61A0282 | 2 |
| LA1 | Socket, lamp | 49A0032 | 1 |
| M1 | Socket plate | 60C1173 | 1 |
| H2 | Screw, pan head, 8-32 x 3/8 in. | 64A0191-6 | 2 |
| H6 | Washer, #4 | 66A0026-7 | 2 |
| H3 | Screw, pan head, 4-40 x 5/8 in. | 64A0169-10 | 2 |
| H7 | Washer, #8 | 66A0026-15 | 2 |
| H5 | Pin, spring, 3-32 x 1/2 | 65A0218 | 4 |
| H4 | Nut, hex, 4-40 | 65A0015-7 | 2 |

Figure 12: Socket Mounting Plate Assembly



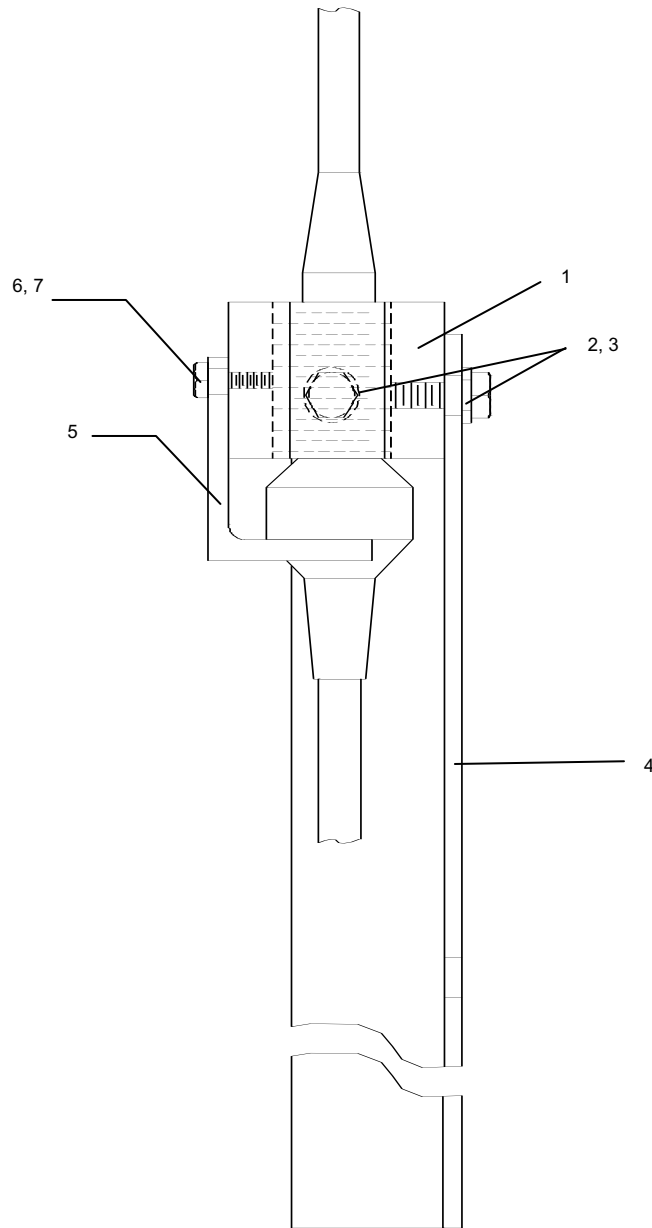
Parts

2.6.2 Optional Stake Assembly Parts List

See Figure 13. The stake assembly part number is 44B0348.

| Item | Description | Part Number | Quantity |
|------|----------------------------------|-------------|----------|
| 1 | Stake hub | 62B0268-1 | 1 |
| 2 | Hex head screw, 3/8-16 x 3/4 in. | 64A0176-12 | 1 |
| 3 | Split lockwasher, 3/8 in. | 66A0026-29 | 1 |
| 4 | Stake | 62B0284 | 1 |
| 5 | Cable connector support | 62B0269 | 1 |
| 6 | Hex head screw, 1/4-20 x 3/4 in. | 64A0173-12 | 1 |
| 7 | Split lockwasher, 1/4 in. | 66A0026-24 | 1 |

Figure 13: Stake Assembly



2.6.3 L-867 Base Plate Parts List

Refer below for the L-867 base plate parts list.

| Part Number | Description | Quantity | Note |
|-------------|---|----------|------|
| 1935 | 12-inch-diameter base plate, 1.5–12 UNF tap | 1 | A |

NOTE A: Supplied with gasket.

2.6.4 Recommended Spare Parts

Table 14: Possible Spare Parts

| Description | Part No. |
|--|------------|
| Column 1", 7.25" (18.42 cm) for 14" OAH | 62A0007-7 |
| Column 1", 17.25" (43.82 cm) for 24" OAH | 62A0007-17 |
| Column 1", 23.25" (59.06 cm) for 30" OAH | 62A0007-23 |
| Column 2", 7.25" (18.42 cm) for 14" OAH ¹ | 44A0907-3 |
| Column 2", 17.25" (43.82 cm) for 24" OAH ¹ | 44A0907-4 |
| Column 2", 23.25" (59.06 cm) for 30" OAH ¹ | 44A0907-5 |
| Filter clip | 60C2041 |
| Frangible coupling, 1.5 inch, 12 TPI | 62B0073 |
| Frangible coupling, 1.5 inch, 12 TPI, with slot ⁴ | 62B0461 |
| Frangible coupling, 2 inch, 11.5 TPI | 62B0605 |
| Clamp band assembly | 44A2060 |
| Gasket | 63A0640 |
| Head assembly | 44A2066-X |
| Lamp, 100 W/6.6 A, PK30d | 48A0380 |
| Lamp, 120 W/6.6 A | 48A0069 |
| Lamp, 150 W/6.6 A (ETL Certified) | 48A0044 |
| Lamp, 200 W/6.6 A (ETL Certified) | 48A0145 |
| Lamp socket | 49A0032 |
| Lens, inner - 180° segment, white ³ | 63B0415-1 |
| Lens, inner - 180° segment, yellow ³ | 63B0415-2 |
| Lens, inner - 180° segment, red ³ | 63B0415-3 |
| Lens, inner - 180° segment, green ³ | 63B0415-4 |
| Lens, inner - 180° segment, obscured ² | 63B0415-6 |
| Lens, inner bracket | 61A0146 |
| Lens, inner spring clip | 65A0163 |
| Outer lens, clear bidirectional (L-862) ³ | 63B0416 |
| Outer lens, red-green, left hand (L-862E) ³ | 63A0602 |
| Outer lens, red-green, right hand (L-862E) ³ | 63A0601 |
| Socket mounting plate assembly | 44A2089 |
| Wire grommet | 63A0042-4 |

¹ Contact the ADB Airfield Solutions Sales Department for additional details on this application

² Color and/or color configuration not recognized by the FAA

³ See Ordering Code for ETL Certification

⁴ Slot across threaded end allows easy replacement of broken frangible coupling

Parts

Registered office:



ADB Airfield Solutions LLC
977 Gahanna Parkway
Columbus, OH 43230
USA

Tel: +1 (614) 861 1304
Fax: +1 (614) 864 2069
Web: www.adb-airfield.com



ADB BVBA
Leuvensesteenweg 585
B-1930 Zaventem
Belgium

Tel: 32/2/722.17.11
Fax: 32/2/722.17.64
Email: info@adb-air.com



ADB Italia
Via Quasimodo 46
Primo Maggio
40013 Castelmaggiore (BO)
Italia

Tel: +55 (11) 5096-2169
Fax: +55 (11) 5049-2304



ADB Airfield Solutions LLC
5500 North Service Road, Suite
1108
Burlington, Ontario L7L 6W6
Canada

Tel: +1 (905) 331 6887
Fax: +1 (905) 331 9389
Web: www.adb-airfield.com



ADB Equipamentos Para
Aeroportos Ltda
Avenida Moaci n° 395
Conjunto 91
Moema CEP 04083-000
Sao Paulo-SP
Brasil

Tel: 00974 44 35 38 03
Fax: 00974 44 35 44 89



ADB Airfield Technologies Ltd.
China
Room 901, 9F, Fang Heng Intl.
Plaza
Building C, No. 6 Futong East
Road, Chaoyang District
Beijing 100102
P.R. China

Tel: +86 (10) 8476 0106
Fax: +86 (10) 8476 0090



ADB Doha
C/O Watad Group
PO Box 192
Doha, Qatar

Tel: 00974 44 35 38 03
Fax: 00974 44 35 44 89



ADB BVBA
Niederlassung Deutschland
Von-der-Tann-Str. 31
90439 Nürnberg
Deutschland

Tel: +49 (0)911 2105 61 60
Fax: +49 (0)911 2105 61 61
Email: info.ADB-GER@adb-air.com



ADB Airfield Solutions, Ltd.
2nd Floor, 3 Rivonia Village
Cnr Mutual Road and Rivonia
Boulevard South
Rivonia 2128
South Africa

Tel: +27 (0) 11 525 9340
Fax: +27 (0) 11 525 9348
Email: info-sa@adb-air.com



ADB Succursale France
22 Avenue des Nations
Parc Silic Roissy-Paris Nord 2,
Immeuble Le Renoir Hall B
93420 Villepinte
France

Tel: +33 (0) 01 49 89 66 30
Fax: +33 (0) 01 49 89 17 81



A-10-01, Level 10
Empire Tower
Jalan SS16/1
45700 Subang Jaya
Selangor, Malaysia

Tel: +603 8941 4868
Fax: +603 8942 4869



ADB
Dubai Silicon Oasis
Wing D - Office D-309
P.O. Box 341218
United Arab Emirates

Tel: +971 4372 4970
Fax: +971 4372 4975

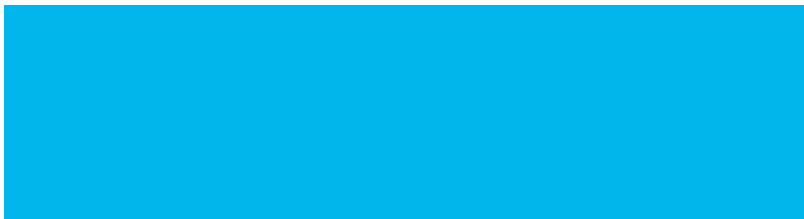


ADB UK
Suite 4
110 High Street
Maidenhead Berkshire
SL6 1PT
United Kingdom

Fax: +01628784865
Customer Services:
+01628672906
Sales & General:
+01628785339



ADB bvba Taiwan Branch
6th floor, No. 283, Section 2 FU
Hsing South Road
Taipei 106
Taiwan R.O.C



**ADB Airfield
Solutions USA**

977 Gahanna Pkwy
Columbus, Ohio 43230 USA
Telephone: (+1 614-861-1304)
Fax: +1 614-864-2069
www.adb-airfieldsolutions.com

The information contained in this document is subject to change without notice. ADB reserves the right to make changes and improvements to its products and assumes no responsibility for making these modifications on any equipment previously sold.

96A0195 © 2014 ADB Airfield Solutions All Rights Reserved